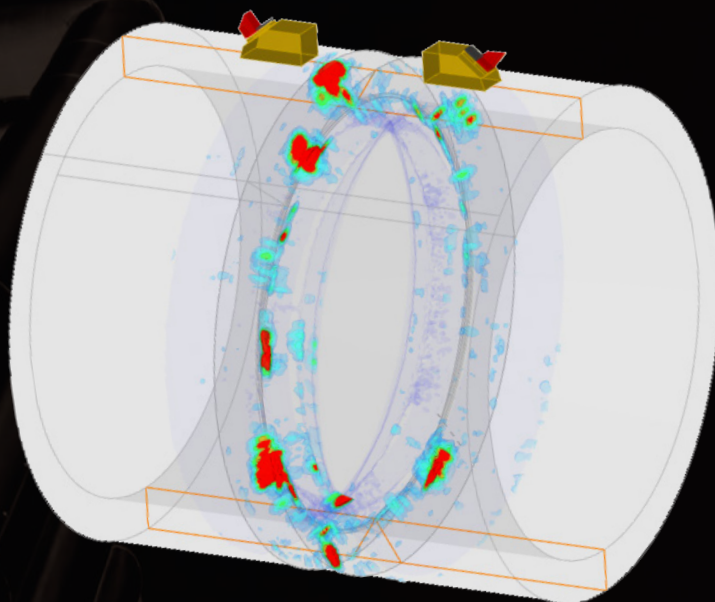


# M2M ENLIGHT™

## Ultrasound analysis for NDT

ENLIGHT is a cost-effective analysis package for NDT that processes M2M data files. ENLIGHT is compatible with the full product range manufactured by M2M, i.e., GEKKO, MANTIS, MULTI2000, MULTIX++ and POCKET.



3D view analysis on ENLIGHT software

### QUICK DIAGNOSTIC

- Customize processing
- Import application templates
- Automate screening

### LOCATE INDICATIONS

- 3D rendering
- Interactive inspection scrolling
- CAD import & creation

### POWERFUL TOOLS

- Large file handling
- Advanced signal processing
- Ray tracing

### CHARACTERIZE DEFECTS

- Group data merging
- Filters
- Smart cursors

### THOROUGH REPORTING

- Offset correction
- Sort indications
- Custom display
- Export reports

### FOR A WIDE RANGE OF APPLICATIONS

Weld . Pressure vessel . Blistering . Girth weld . Small diameter pipes  
Corrosion mapping . Nozzle, T, K, Y joints . Composite . Cladded weld  
HTHA . HIC . SOHIC . Porosity . Cracks . Delamination . Disbonding  
LOF . SLAG

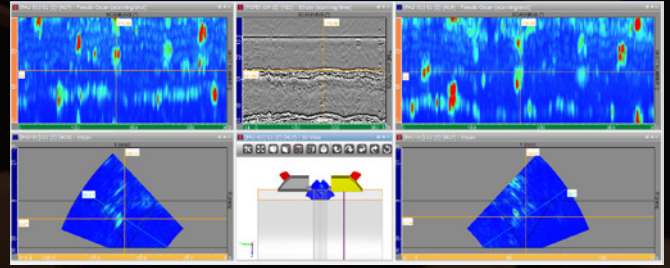
The information in this document is accurate as of its publication.

©2018 Eddyfi Technologies. M2M, Gekko, Mantis, Acquire, Enlight and their associated logos are trademarks or registered trademarks of Eddyfi Technologies in the United States and/or other countries. Eddyfi Technologies reserves the right to change product offerings and specifications without notice. 2018-09-13

# M2M ENLIGHT™

## CHARACTERIZE DEFECTS & LOCATE INDICATIONS

- Scan display: A-, B-, C-, D-, S-, E-Scan
- 2D scan images superimposed onto the 3D part
- Display mode modification: HF, Envelope, Rectified, FFT
- Additional general gain
- Gate definition and synchronization
- TOFD calibration, lateral wave straightening and removal
- Delay law display
- Amplitude measurement & calibration
- Distance measurement (3D), surface measurement
- Specimen reconstruction: 2D or 3D CAD specimen

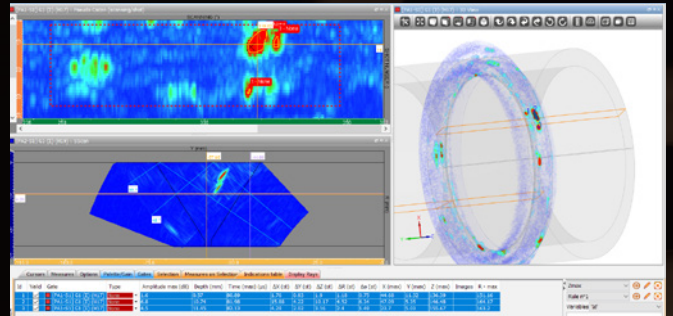


Multi-group: 2PA + TOFD

- Data merging
- Reconstruction according to material and geometrical characteristics
- Multiple skip reconstruction.

## POWERFUL TOOLS

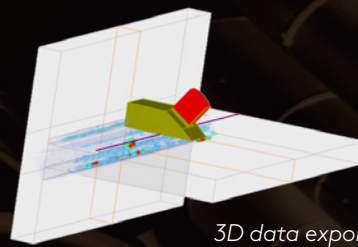
- Segmentation with 3D representation
- 2D overlay generation
- 3D parts (T & Y fillet welds, nozzles)
- 3-axis encoded scans
- 3D ray tracer
- Multi-group data files with data merging
- Accepted data formats: M2M systems, Gekko, Mantis.



Segmentation and results displayed in 3D

## QUICK DIAGNOSTIC

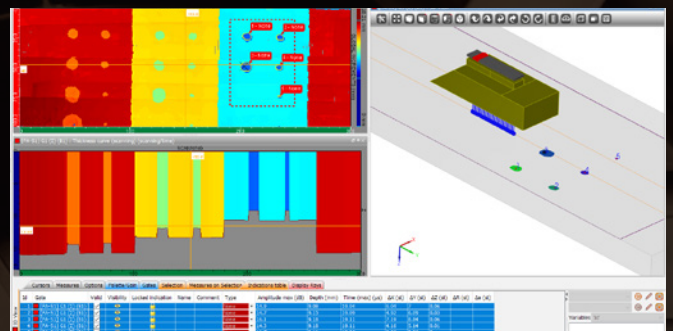
- Cross-section views (Slicer – dynamic display)
- Import plugins
- Customize templates
- Automatic contour and sizing
- Histogram.



3D data export in a T-joint geometry

## THOROUGH REPORTING

- Manage unit parameters: %, dB, points,  $\mu$ s, mm, inch
- Layout definition
- Complete traceability of actions modifying data
- 3D full data export
- Customization of report, export in PDF or html
- Indication table with all reported defects.



Weld inspection from the weld cap using ATFM